



KDP series TWO-component screw valves Desktop Dispensing Machine,FFKM, brushless DC

Our Product Introduction

for more products please visit us on mingseal-en.com

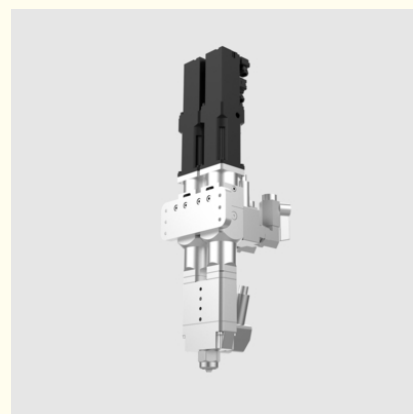
Basic Information

- Place of Origin: China
- Brand Name: MingSeal
- Certification: ISO CE
- Model Number: KDP
- Minimum Order Quantity: 1
- Price: \$1-\$10000
- Packaging Details: WOODEN
- Delivery Time: 5-60 days
- Payment Terms: L/C, T/T, D/A, D/P, MoneyGram, Western Union



Product Specification

- Condition: New
- Type: DDP
- Automatic Grade: Automatic
- Certification: CE Certificate, ISO, CE/ISO
- After-sales Service Provided: Engineers Available To Service Machinery Overseas, Online Support, Video Technical Support, No Overseas Service Provided, Free Spare Parts
- Warranty: One Year
- Mixing Ratio: 1:1/2:1
- Minimum Dispensing Amount: 200ul
- State Material: FFKM
- Flow Rate: 4-180mL/min
- Highlight: **Portable smt mounter machine, Pick And Place smt mounter machine, portable pick and place machine Valves**



More Images

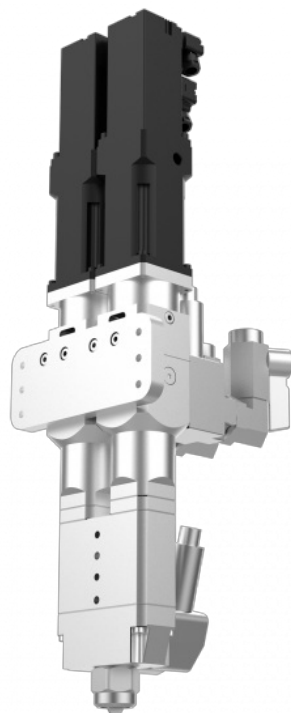


TWO-COMPONENT SCREW VALVE

KDP0900 is a precision volumetric metering two-component screw valve, which is suitable for applications in which precise control of two-component mixing ratio is required, and can handle various kinds of two-component structural glue.

Eccentric Screw Valve Selection Table

Type	Model	Mixing ratio	Flow rate	Glue output per circle	Minimum dispensing amount
Single-component	KSP0150	—	0.01~1.2mL/min	10uL	1uL
	KSP0450	—	0.05~6mL/min	50uL	5uL
	KSP0700	—	0.50~60mL/min	500uL	50uL
	DSP0150	—	0.3~1.5mL/min	150uL	15uL
	DSP1000	—	2~90mL/min	1000uL	100uL
Two-component	KDP0300	1:1/2:1	0.02~2.4mL/min	—	2uL
	KDP03X0	4:1/10:1	0.11~1.32mL/min	—	11uL
	KDP0900	1:1/2:1	0.1~12mL/min	—	10uL
	KDP09X0	4:1/10:1	0.55~6.6mL/min	—	55uL
	KDP0700	1:1/2:1	1~100mL/min	—	100uL
	DDP0150	1:1/2:1	0.6~3mL/min	—	30uL
	DDP1000	1:1/2:1	4~180mL/min	—	200uL



Mingseal INTELLIGENT & EFFICIENT **Changzhou Mingseal Robot Technology Co., Ltd.**

☎ 008613776880183

✉ market01@mingseal.com

🌐 mingseal-en.com

No. 18-98, Changwu Middle Road, Wujin District, Changzhou City, Jiangsu Province