



GS600DD Fully- Automatic Dispensing Machine For Dam & Fill FCBGA Application Wire Bonding Encapsulation

Our Product Introduction

for more products please visit us on mingseal-en.com

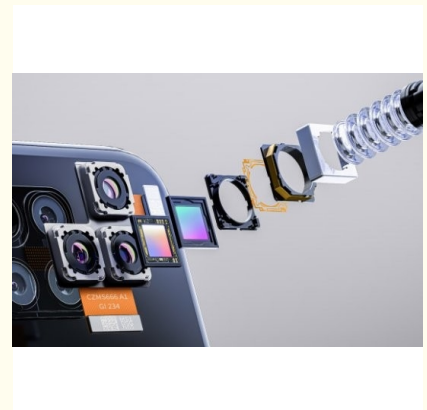
Basic Information

- Place of Origin: China
- Brand Name: MingSeal
- Certification: ISO
- Model Number: GS600DD
- Minimum Order Quantity: 1
- Price: \$28000-\$150000
- Packaging Details: WOODEN
- Delivery Time: 5-60 days
- Payment Terms: L/C, T/T, D/A, D/P, MoneyGram, Western Union

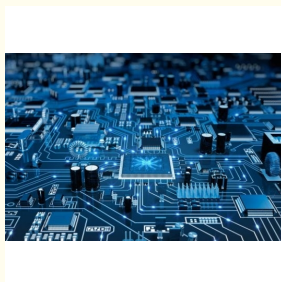
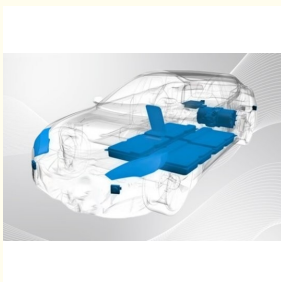


Product Specification

- Condition: New
- Automatic Grade: Automatic
- Product Name: GS600DD Fully- Automatic Dispensing
- System Composition: GS600DD * 1 Magazine Automatic Loading & Unloading Machine * 1
- Warranty: One Year
- Dimensions: 770×1650×2100mm
- Transmission System: X/Y Linear Motor Z Servo Motor&Screw Module
- Ambient Temp. & Humidity: 25°C±5°C 30 ~ 70%
- Footprint W×D×H: 770×1650×2100mm (w/o Loading & Unloading)
- Highlight: **FCBGA smt dispenser, Led smt dispenser, FCBGA led pick and place machine**



More Images



Product Description

GS600DD Fully- Automatic Dispensing Machine

For Dam & Fill

GS600DD fully-automatic dispensing machine is a piece of high-stability and high-precision dispensing equipment which is developed based on Dam & Fill process requirements of FCBGA,etc.The equipment meets the needs of the semiconductor industry,is provided with an automatic loading & unloading system, and can automatically realize functions of magazine loading & unloading , dam glue-jetting and underfill glue-jetting. It is compatible with international semi- conductor communication protocols , and matches the information management requirements and unmanned management trends.

System Composition

GS600DD fully- automatic dispensing machine × 1 Magazine automatic loading & unloading machine × 1

Operation Flow

Magazine loading -Dam glue-jetting-Underfill glue-jetting-Magazine unloading

Features and Advantage

Good shock absorption with mineral frame structure to effectively reduce the impact caused by high-speed equipment operation.

Capacitive detection and laser induction detection to avoid product loss caused by insufficient glue amount

Dustproof level 10, meeting the packaging environment requirements.

Automatic dispensing position compensation function to ensure the dispensing accuracy

ESD protection meeting international IEC and ANSI standards.

Glue width detection function to avoid process risks caused by poor dispensing.

Technical Specifications

Model GS600DD		
System Composition	GS600DD * 1, Magazine automatic loading & unloading machine * 1	
Application Fields	FCBGA, Wire Bonding Encapsulation	
Cleanliness Level	Cleanliness of working area	Class 100 (Class 1000 workshop) Class 10 (Class 100 workshop)
Transmission System	Dimensions	770×1650×2100mm
	Transmission system	X/Y: Linear motor Z: Servo motor & Screw module
	Repeatability (3sigma)	X/Y: ±5 μm Z: ±10 μm
	Positioning accuracy (3sigma)	X/Y: ±10 μm Z: ±25 μm
	Max. movement speed	X/Y: 1300mm/s Z: 500mm/s
	Max. accelerated velocity	X/Y: 1.3g Z: 0.5g
	Dispensing range	355mm×595mm
	Grating resolution	1 μm
	Visual repetitive matching accuracy	5 μm
	Adhesive single-point position accuracy	≤±30 μm
	Z axis height calibration & compensation method	Laser sensor
	Laser sensor accuracy	±1 μm
	Z axis spec.	Asynchronous Double-head
	Applicable syringe type	5cc, 10cc, 30cc, 50cc, 70cc
	Glue weight accuracy	10mg±3%, 5mg±5%
	Weighing module accuracy	220g/0.1mg
Vision Module	Pixel	500W (2048×2448dpi)
	Lens	0.2X telecentric lens
	Camera view	35×35mm
	Single pixel accuracy	17 μm
	Glue width detection	≥ 170 μm
	AOI FRR (misjudgment rate)	2.5%
	AOI FAR (missing detection rate)	0
	Visual positioning method	Mark/Product appearance features
	Angle correction capability of the secondary valve relative to the main valve	0-180° (7 × 7mm Workpiece) 0-3° (110×110mm Workpiece)
Facilities	Shooting method	Positioning shot/fly shot
	Ambient temp. & humidity	25°C±5°C , 30 ~ 70%
	Footprint W× D × H	770×1650×2100mm (w/o Loading & Unloading)



Mingseal INTELLIGENT & EFFICIENT **Changzhou Mingseal Robot Technology Co., Ltd.**



008613776880183



market01@mingseal.com



mingseal-en.com

No. 18-98, Changwu Middle Road, Wujin District, Changzhou City, Jiangsu Province